

ROTHERHAM BOROUGH COUNCIL – REPORT TO MEMBERS

| | |
|---------------------------|---|
| 1. Meeting: | Cabinet Member for Regeneration and Environment |
| 2. Date: | 6 June 2011 |
| 3. Title: | Rotherham Local Site System – boundary corrections |
| 4. Programme Area: | Environment and Development Services |

5. Summary

This report seeks approval of corrections made to the current series of Local Wildlife Site boundaries.

6. Recommendations

- That the corrected Local Wildlife Site boundaries be accepted;
- That approval is given to proceed with the integration of the corrected Local Wildlife Sites boundaries into the preparation of the Local Development Framework and in the determination of relevant planning applications.

Proposal and Details

The 2010 series of Local Wildlife Site boundaries was accepted by Cabinet Member for Regeneration and Environment 24.01.2011 under minute G96. It has come to light that a number of the site boundaries had been drawn encompassing residential and / or agricultural buildings; this is contrary to the adopted Rotherham Local Wildlife Site System Framework which states:

“The selection guidelines will not be applied to domestic or industrial (including agricultural) buildings, or to domestic gardens. Other artificial structures, for example, mine shafts, tunnels, bridges, historic monuments (except those that are also domestic dwellings), may, however, be considered for designation.”

Corrections have been made to the relevant sites to exclude the buildings in line with the framework standards.

It is recommended that the corrected boundaries be accepted and that approval is given to proceed with the integration of the corrected Local Wildlife Sites boundaries into the preparation of the Local Development Framework and in the determination of relevant planning applications.

An update of the Local Wildlife Site series map is attached in Appendix One.

8. Finance

The cost of the Local Wildlife Site correction work has been met by the EDS Forward Planning budget.

9. Risks and Uncertainties

The operation of a Local Site System enables RMBC to demonstrate compliance with current legislation and planning policy including the need to have a robust evidence base. The Local Wildlife Site System, as approved, includes a responsibility for any additions and amendments to the site list to be reported annually to the Cabinet Member for Regeneration and Environment.

Where errors are identified in the evidence base it is appropriate to make corrections and follow the approved route for acceptance of the amendments. The approval for this amendment is sought now to enable the amended series of sites to be reflected in the preparation of the Local Development Framework.

10. Policy and Performance Agenda Implications

Planning Policy Statement 12 (ODPM, 2008) states that areas of protection, such as nationally protected landscape and internationally, nationally and locally designated areas and sites, should be included on adopted proposals maps.

Planning Policy Statement 9 (ODPM 2005) states that 'sites of regional and local biodiversity and geological interest, which include Regionally Important Geological Sites, Local Nature Reserves and Local Sites, have a fundamental role to play in

meeting overall national biodiversity targets; contributing to the quality of life and the wellbeing of the community; and in supporting research and education. Criteria-based policies should be established in local development documents against which proposals for any development on, or affecting, such sites will be judged.'

Planning for Biodiversity and Geological conservation – A guide to Good Practice (ODPM 2005) states that local development frameworks should indicate the location of designated sites of importance for biodiversity and geodiversity, making clear distinctions between the hierarchy of international, national, regional and locally designated sites'.

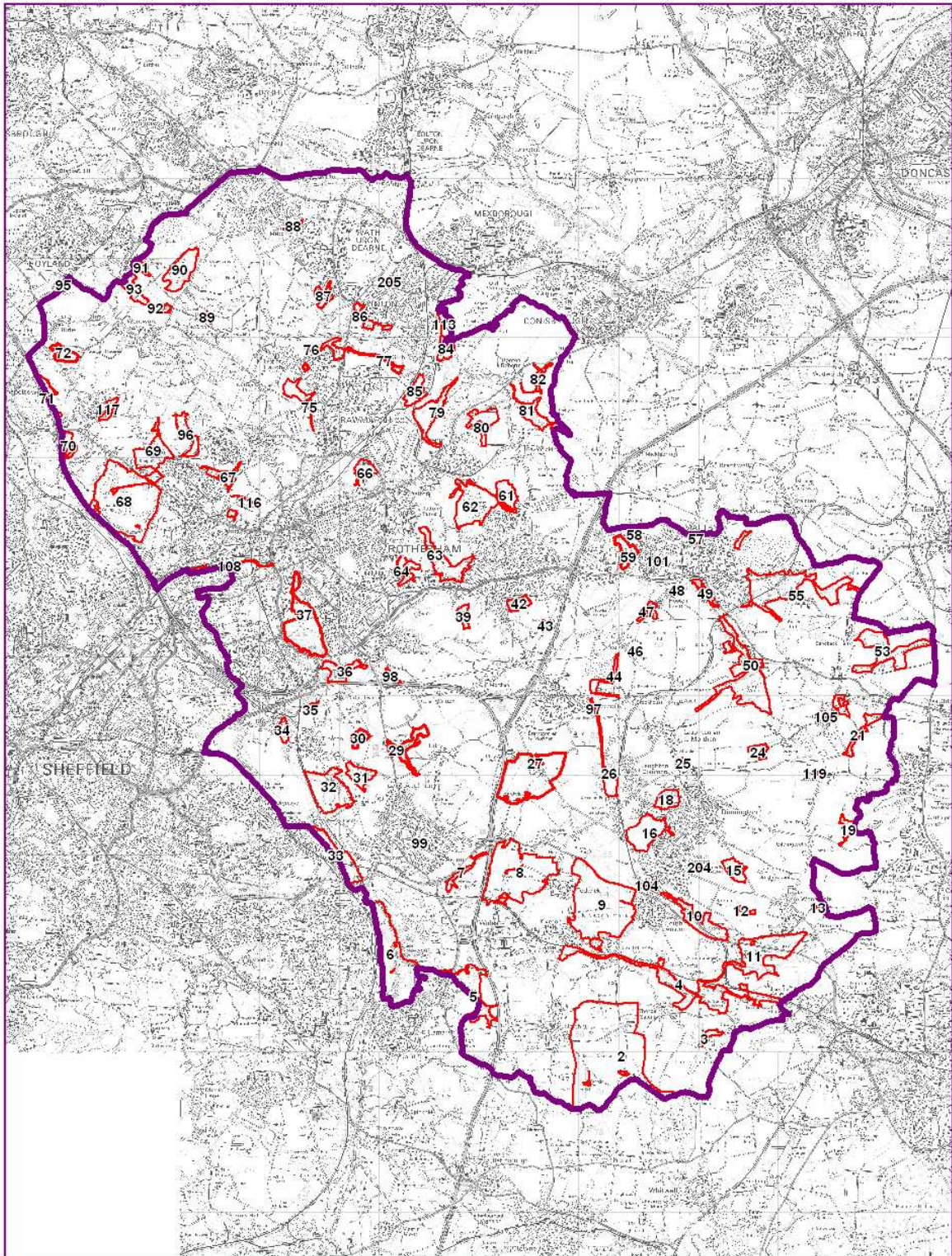
The maintenance of a Local Site system and positive site management are essential elements of Local Area Agreement Indicator NI197 – 'Improved local biodiversity – active management of local sites'.

11. Background Papers and Consultation

- Baker Shepherd Gillespie - Ecological Consultants (April 2007)
Rotherham Local Wildlife Site System:
 - Part 1: The Framework for Rotherham's Local Wildlife Site System,
 - Part 2: Site Selection Guidelines for Rotherham.
- Defra Local Sites – Guidance on their Identification, Selection and Management (February 2006)
- Former Cabinet Member for Economic and Regeneration and Development Services (5.4.2006) RMBC <http://moderngov.rotherham.gov.uk>
- Former Cabinet Member for Economic and Regeneration and Development Services (24.11.2008) RMBC <http://moderngov.rotherham.gov.uk>
- ODPM Planning Policy Statement 9 – Biodiversity and Geological Conservation (2005)
- ODPM Planning for Biodiversity and Geological Conservation – A guide to Good Practice (ODPM 2005)
- ODPM Planning Policy Statement 12 – Local Development Frameworks (2008)
- RMBC Cabinet (17.12.08) <http://moderngov.rotherham.gov.uk>
- The Natural Environment and Rural Communities (NERC) Act 2006
CLG National Indicators for Local Authorities and Local Authority Partnerships
- RMBC Cabinet Member for Regeneration and Environment (24.01.2011)
<http://moderngov.rotherham.gov.uk>

Contact Names: Carolyn Barber, Ecology Development Officer 822462.

Appendix One



Rotherham Local Wildlife Site Boundaries - 2011

Reproduced from the Ordnance Survey mapping with the permission of the Controller of Her Majesty's Stationery Office © Crown copyright.
Unauthorised reproduction infringes Crown copyright and may lead to prosecution or civil proceedings. Rotherham MBC Licence No. 100019587;
A-Z Maps Copyright Geographers' A-Z Map Co. Ltd
Historical Mapping Copyright The Landmark Information Group.